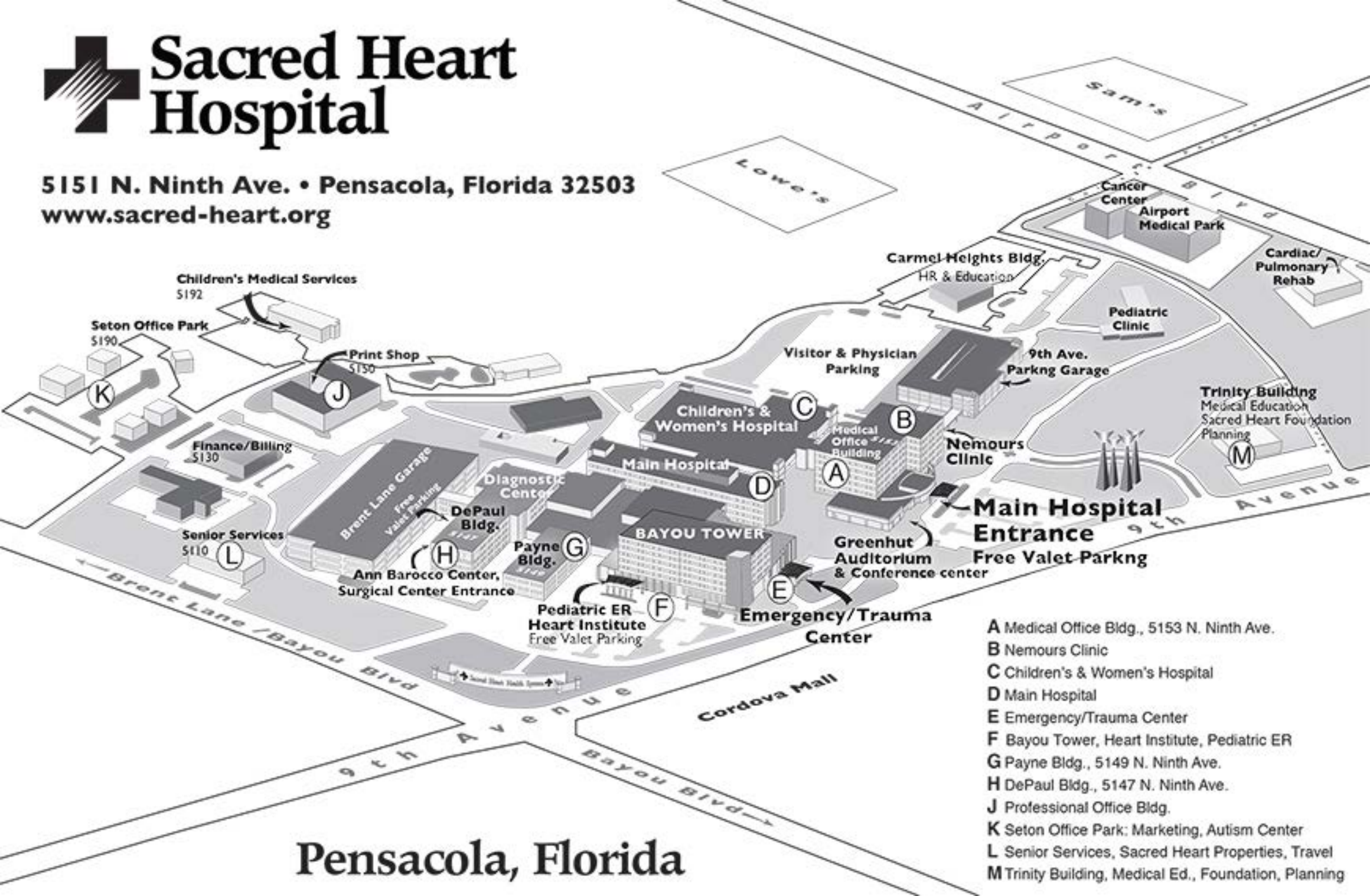




Sacred Heart Hospital

5151 N. Ninth Ave. • Pensacola, Florida 32503
www.sacred-heart.org



- A Medical Office Bldg., 5153 N. Ninth Ave.
- B Nemours Clinic
- C Children's & Women's Hospital
- D Main Hospital
- E Emergency/Trauma Center
- F Bayou Tower, Heart Institute, Pediatric ER
- G Payne Bldg., 5149 N. Ninth Ave.
- H DePaul Bldg., 5147 N. Ninth Ave.
- J Professional Office Bldg.
- K Seton Office Park: Marketing, Autism Center
- L Senior Services, Sacred Heart Properties, Travel
- M Trinity Building, Medical Ed., Foundation, Planning

Pensacola, Florida

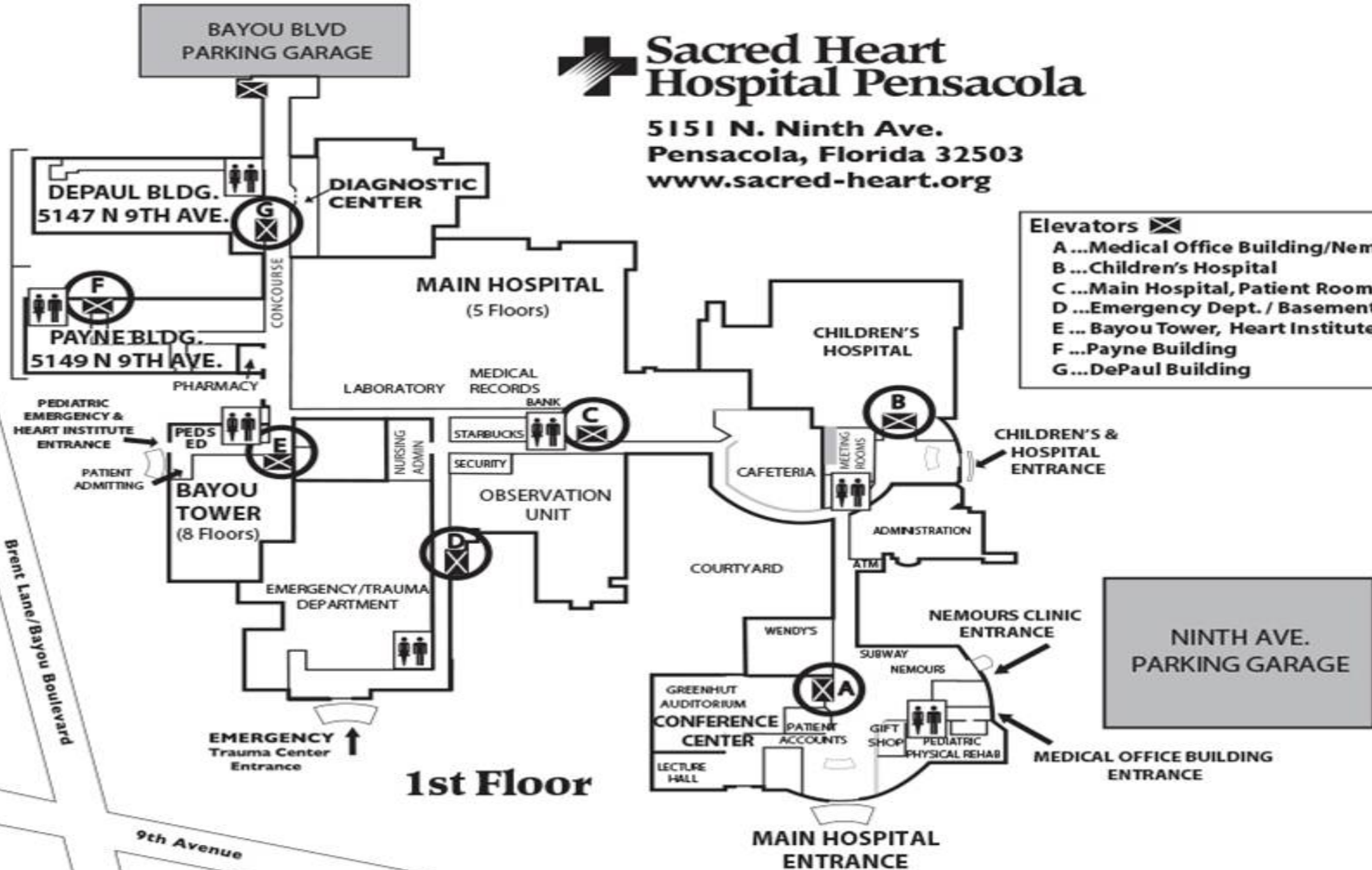


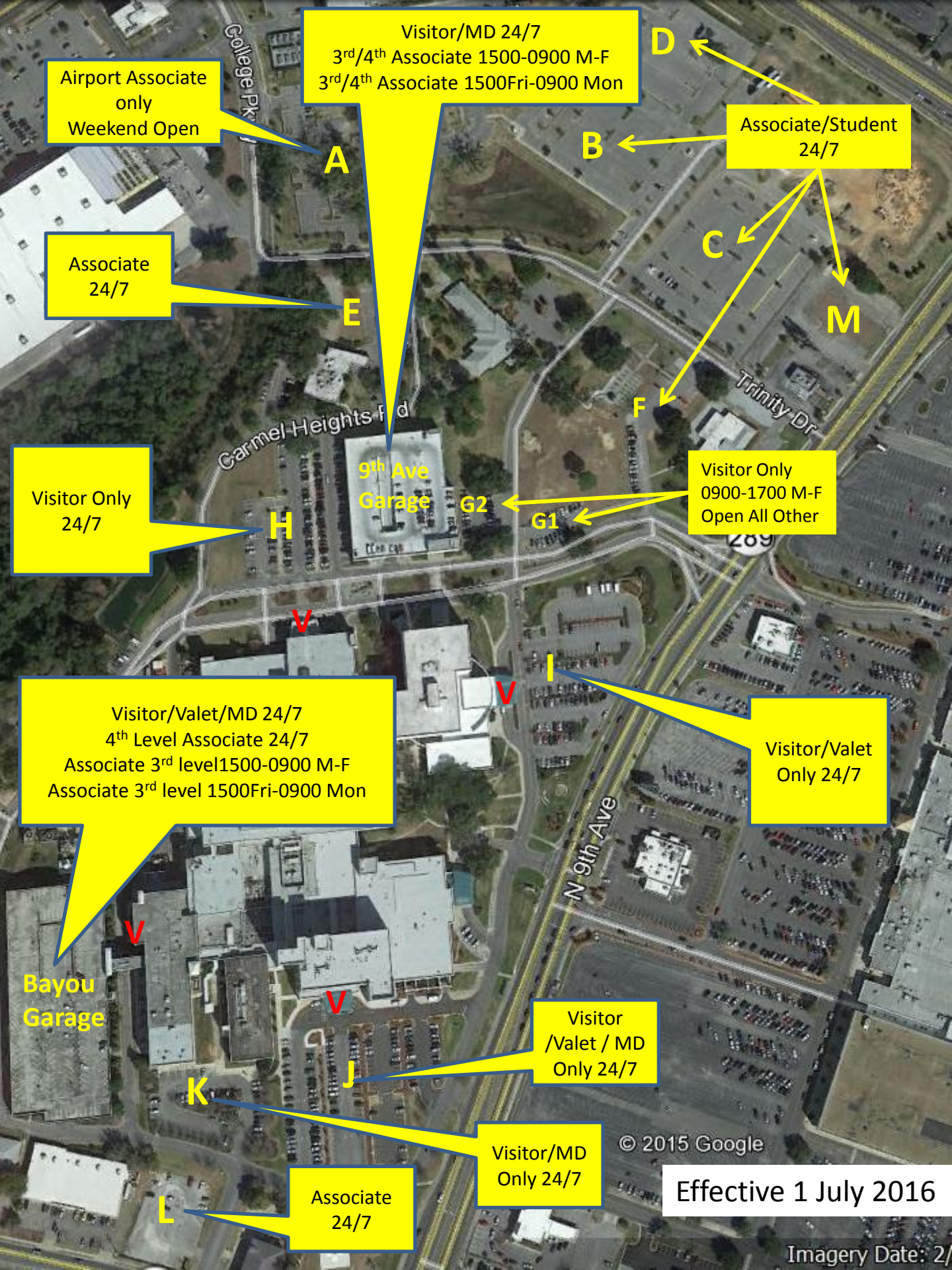
Sacred Heart Hospital Pensacola

5151 N. Ninth Ave.
Pensacola, Florida 32503
www.sacred-heart.org

Elevators

- A ...Medical Office Building/Nemours
- B ...Children's Hospital
- C ...Main Hospital, Patient Rooms
- D ...Emergency Dept. / Basement
- E ...Bayou Tower, Heart Institute
- F ...Payne Building
- G ...DePaul Building





Airport Associate only
Weekend Open

Visitor/MD 24/7
3rd/4th Associate 1500-0900 M-F
3rd/4th Associate 1500Fri-0900 Mon

Associate/Student
24/7

Associate
24/7

Visitor Only
24/7

Visitor Only
0900-1700 M-F
Open All Other

Visitor/Valet/MD 24/7
4th Level Associate 24/7
Associate 3rd level 1500-0900 M-F
Associate 3rd level 1500Fri-0900 Mon

Visitor/Valet
Only 24/7

Bayou
Garage

Visitor
/Valet / MD
Only 24/7

Visitor/MD
Only 24/7

Associate
24/7

© 2015 Google

Effective 1 July 2016

Imagery Date: 2/

Parking Guidelines: Sacred Heart Hospital Pensacola Campus (EFFECTIVE 1 JULY 2016)

- ♦ Rationale: Convenient parking for visitors, patients and physicians is an essential element in our ministry of care.
- ♦ While there is plenty of parking available, those spaces closest to the entrances of our facility should be reserved for the customers whom we serve.
- ♦ Our goal is to continue to provide all associates with safe, convenient and free parking options as we pursue improved access for our customers.
- ♦ **Decals are available 24 hours a day from the Security Officer located in the Emergency Department.**

<p>Day Shift Associates (7a – 7p)</p> <ul style="list-style-type: none"> • Lot A (Oaks Parking) Airport Medical Building personnel only (special decal required) • Lots B, C, & D - Royal Arms Parking Area • Lot E Carmel Heights (gravel) and undesignated spaces between Carmel Heights and the Peds Clinic • Lot F: lot between Garden/green space and Trinity Building • Lot L: South or Old Taco Bell Lot • Lot M: lot north of Marble Slab • Bayou Garage: 4th Level • Motorcycle parking is allowed on the 1st, 2nd & 3rd floors of the Bayou Garage <p>Associates Reporting to work after 12:00pm</p> <ul style="list-style-type: none"> • 4th Level of 9th Avenue Garage <p>Associates Reporting to work after 3:00pm</p> <ul style="list-style-type: none"> • 3rd & 4th Level of 9th Avenue Garage • 3rd Level of the Bayou Garage • Vehicles must be moved by 9:00am the following day <p>Night Shift Associates (7p-7a)</p> <ul style="list-style-type: none"> • All the above spaces • Lot G1 and G2 (must be moved by 9am the following day) <p>Weekend Shifts</p> <ul style="list-style-type: none"> • All the above parking areas are authorized for weekend shifts • 3rd level of Bayou Garage and 3rd & 4th Levels 9th Ave Garage (1900 Friday until 0900 Monday) • Associates parked in Lots G1, G2, must be moved by 9am on Monday) 	<p>Designated Parking for Tenured Associates (20-29 years of Service) (special decal required)</p> <ul style="list-style-type: none"> • 4th Level Bayou Garage designated spaces) <p>Designated Parking for Tenured Associates (30 or more Years of Service) (special Hang Tag required)</p> <ul style="list-style-type: none"> • Any undesignated parking space <p>Allied Health (ARNP/CRNA/PA) Parking 3rd or 4th Level of Bayou or 9th Ave Garage</p> <p>Unauthorized Parking Areas (Off Limits to Staff 24 Hours a day)</p> <ul style="list-style-type: none"> • Physician spaces • Visitor & Valet spaces • Vendor & Courier spaces • Clergy spaces • Cordova Mall /Publix/Marble Slab • 1st and 2nd Levels of 9th Avenue Garage • 1st and 2nd Levels of the Bayou Garage – except for motorcycles or as otherwise authorized • Lot H: WC Surface Lot • Lot I: MOB Surface Lot • Lot J: Bayou Tower/ED Surface Lot • Lot K: DePaul / Payne Surface Lot • Seton Park & Ronald McDonald House • Cordova Medical and Dental Building • Trinity Bldg (Corner of 9th and Trinity) • All grass areas • Lot N- West Lot- (Finance, POB, Senior Spirit (Old HR Bldg)) • <i>Unless assigned to work in these Departments or conducting business related to these areas. Must have specific decal to park.</i>
--	--

Security available for Associate Escort To/From Parking Areas 24/7: Call 416-7567

Holiday Parking: Authorized in the parking garages (Bayou Garage and 9th Ave (Levels 2, 3, and 4) by all associates on these holidays:

New Years Day, Memorial Day, Independence Day, Labor Day, Thanksgiving Day, and Christmas Day
(No Shuttle Service provided on these days; no parking in physician/reserved parking spaces)